

PROCEEDINGS  
OF THE  
BIOLOGICAL SOCIETY OF WASHINGTON

A NEW RACE OF THE HEPATIC TANAGER.

BY OUTRAM BANGS.

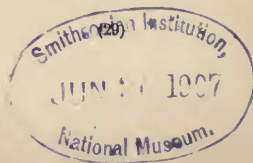
Since first described by Swainson in 1827,\* *Piranga hepatica* has never been divided into subspecies. There are, however, two very well marked geographic races of this tanager, one a large, dull-colored bird ranging from the table lands and surrounding mountains of southwestern Mexico north to Arizona and New Mexico, the other, smaller and much more intensely colored, occupying the mountains of eastern Mexico from Vera Cruz north to Nuevo Leon.

Swainson gave the type locality of his *Piranga hepatica* as "Real del Monte, Hidalgo," which Mr. E. W. Nelson tells me is Temescaltepec, Mexico, of recent maps. There are no skins available from this immediate place, but numerous specimens in the Biological Survey collection from localities in the same general region are all referable to the ordinary large, dull-colored form, which, moreover, Swainson's description ("Grayish livid, beneath bright red, t. l., 8; bill,  $\frac{3}{4}$ ; wing, 4; tail,  $3\frac{1}{2}$ ; tarsi,  $\frac{3}{4}$ "), brief as it is, seems to indicate. The new form is therefore that of eastern Mexico.

The differences in color between the two races of *Piranga hepatica* are much like those that separate the eastern from the western form of *Piranga bidentata*, and the pale and dark race of each species has in part the same geographic distribution, *Piranga bidentata bidentata*, the pale western race, occurring with *Piranga hepatica hepatica*, the pale race of that species in Mexico and adjacent States, and *P. bidentata sanguinolenta* occupying the same region with *P. hepatica dextra*, both richly colored races, in eastern States from Nuevo Leon to Vera Cruz.

The new form of the hepatic tanager may be known as

\* Philo. Mag., New Series I, p. 438, 1827.



***Piranga hepatica dextra* subsp. nov.**

*Type*.—From Jalapa, Vera Cruz, Mexico, adult ♂, No. 2090, coll. of E. A. and O. Bangs. Collected April 18, 1897, by C. B. Isham.

*Characters*.—Similar to true *P. hepatica*, but smaller; the adult ♂ much more richly colored; back much redder, less grayish; pileum darker, more intense red—dull scarlet—vermilion; under parts, darker, deeper red—deep orange—vermilion (flame-scarlet in true *P. hepatica*). Adult ♀ darker in color throughout with the back decidedly less grayish.

*Measurements*.—*Type*, adult ♂, wing, 96.; tail, 74.5; tarsus, 23.; culmen, 18.5.